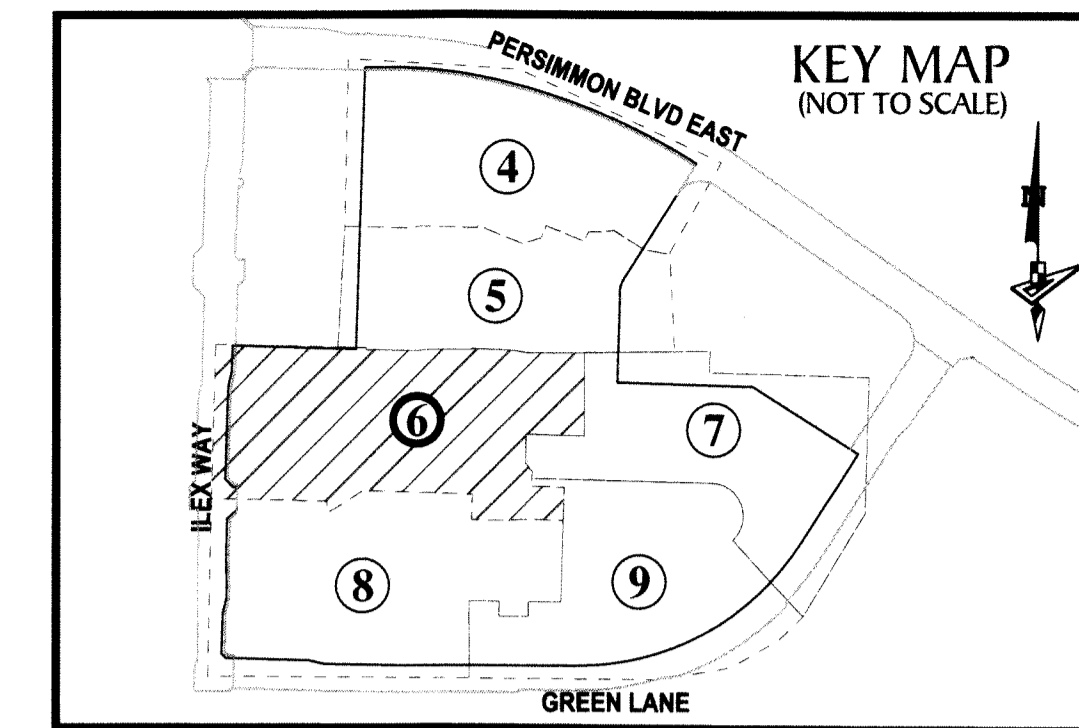
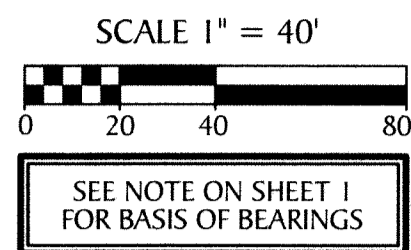


SKY COVE SOUTH - PHASE 1 A

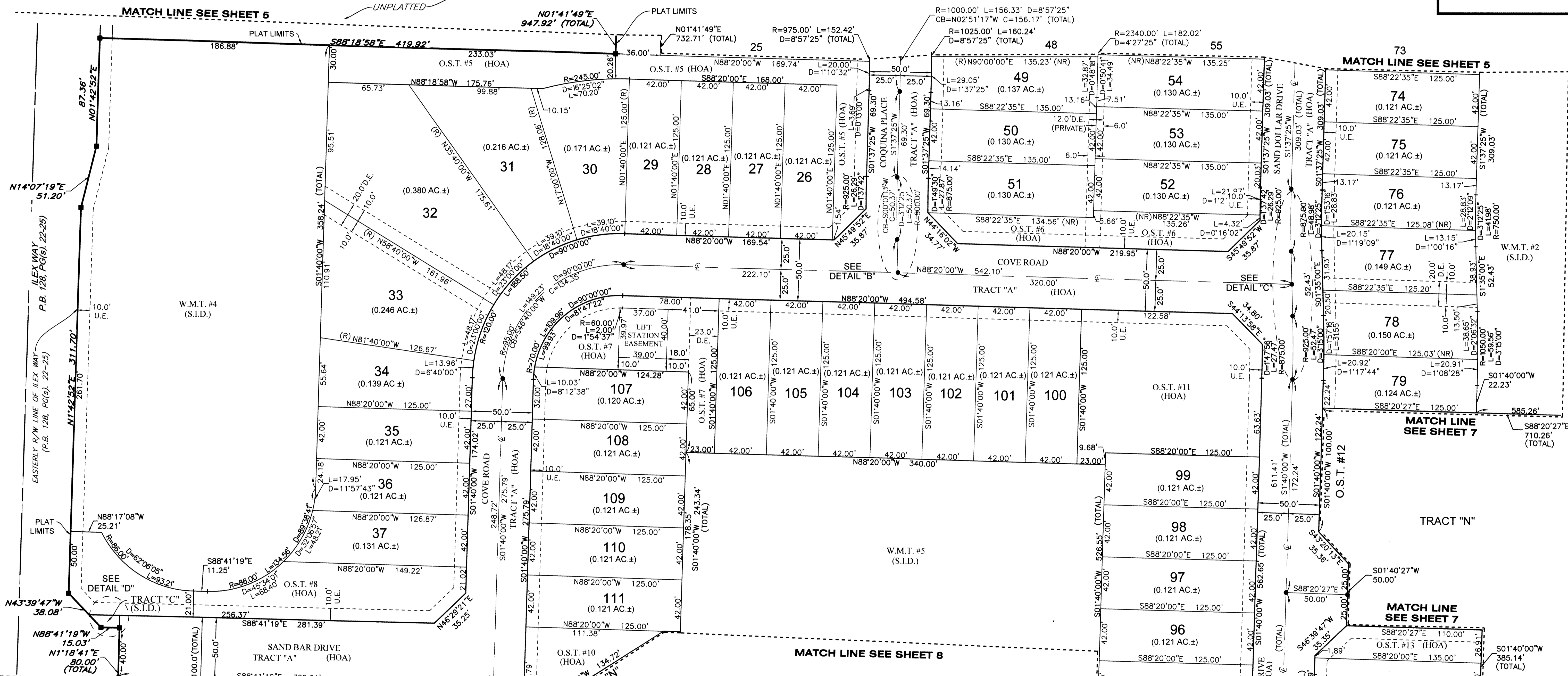
BEING A REPLAT OF A PORTION OF OPEN SPACE TRACT #1 AND ALL OF OPEN SPACE TRACT #2, ILEX WAY PHASE II, PLAT BOOK 128, PAGES 22 THROUGH 25, INCLUSIVE, AND A PORTION OF OPEN SPACE TRACT #1, PERSIMMON BOULEVARD EAST - PLAT 2, PLAT BOOK 128, PAGES 16 THROUGH 19, INCLUSIVE, BOTH OF THE PUBLIC RECORDS OF PALM BEACH COUNTY, FLORIDA, TOGETHER WITH A PORTION OF SECTION 12, TOWNSHIP 43 SOUTH, RANGE 40 EAST, CITY OF WESTLAKE, PALM BEACH COUNTY, FLORIDA,

LEGEND

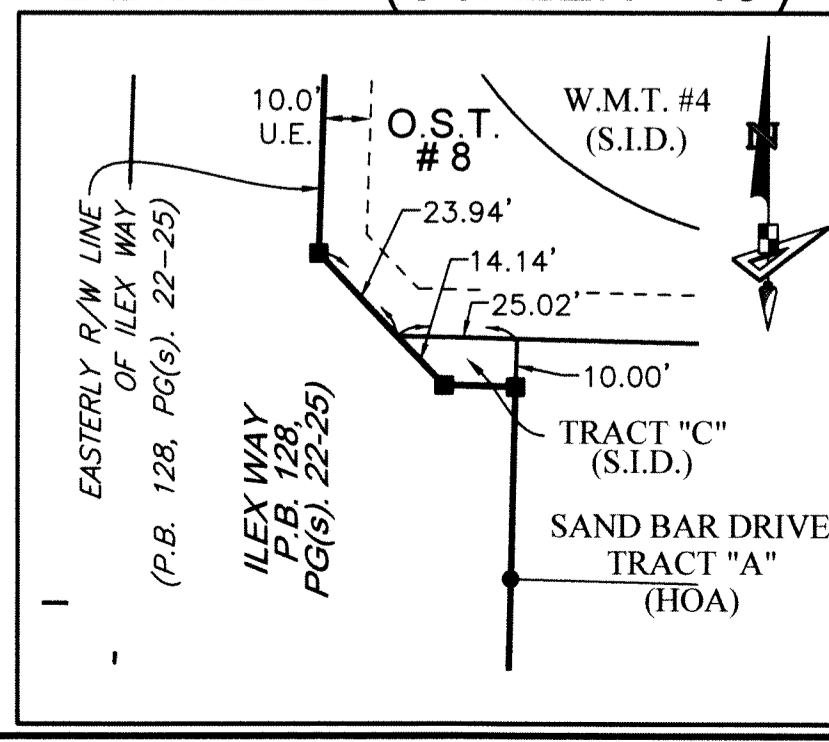
- | | | | |
|-------------------------------------|---|--|---|
| P.O.B. ----- POINT OF BEGINNING | R.P.B. ----- ROAD PLAT BOOK | S.I.D. ----- SEMINOLE IMPROVEMENT DISTRICT | R.P.E. ----- RURAL PARKWAY EASEMENT |
| P.O.C. ----- POINT OF COMMENCEMENT | U.E. ----- UTILITY EASEMENT | CB ----- CHORD BEARING | HOA ----- HOMEOWNERS ASSOCIATION |
| P.B. ----- PLAT BOOK | D.E. ----- DRAINAGE EASEMENT | C ----- CHORD | PRM ----- PERMANENT REFERENCE MONUMENT |
| D.B. ----- DEED BOOK | L.M.A.E. ----- LAKE MAINTENANCE ACCESS EASEMENT | R/W ----- RIGHT-OF-WAY | ● ----- PERMANENT CONTROL POINT |
| PG./PG(S) ----- PAGE(S) | R.P.E. ----- RURAL PARKWAY EASEMENT | ⊕ ----- CENTER LINE OF ROAD | ⊙ ----- FOUND PERMANENT REFERENCE MONUMENT |
| NAD ----- NORTH AMERICAN DATUM | 7-43-41 ----- SECTION-TOWNSHIP-RANGE | (R) ----- RADIAL | ■ ----- SET 4"x4" CONCRETE MONUMENT WITH 2" ALUMINUM DISK STAMPED "PRM LB 7768" |
| W.M.T. ----- WATER MANAGEMENT TRACT | R ----- RADIUS | (NR) ----- NON-RADIAL | |
| O.S.T. ----- OPEN SPACE TRACT | L ----- ARC LENGTH | PRM ----- PERMANENT REFERENCE MONUMENT | |
| P.B.C. ----- PALM BEACH COUNTY | D ----- DELTA ANGLE | | |



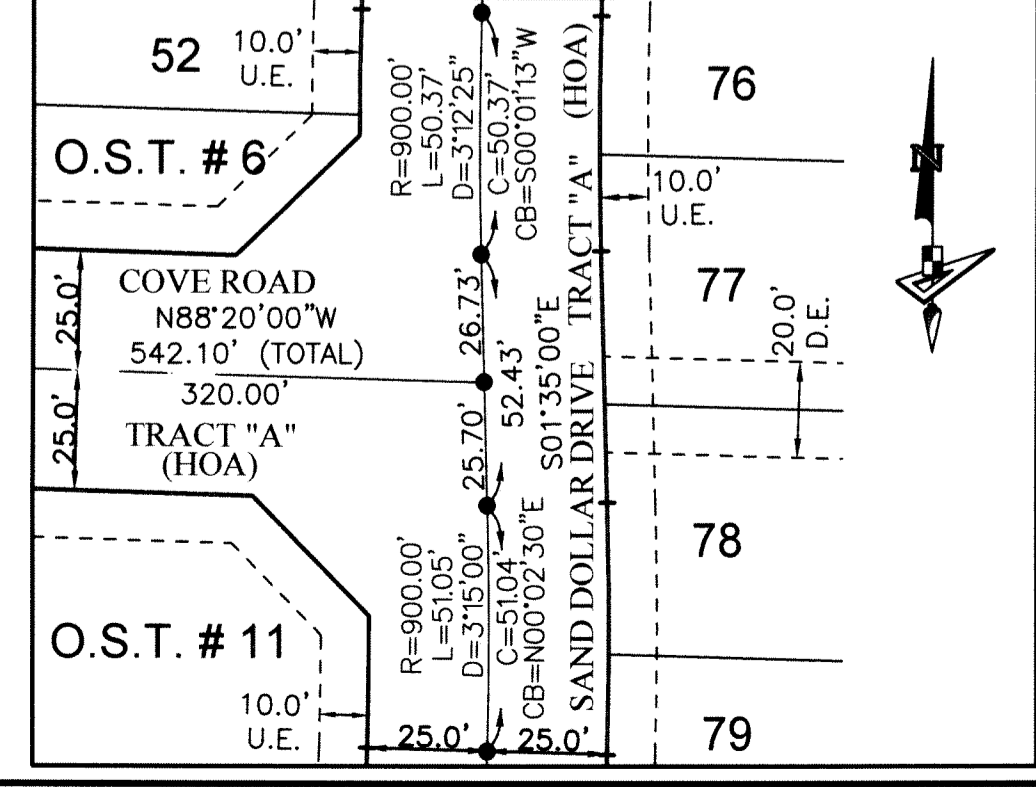
175



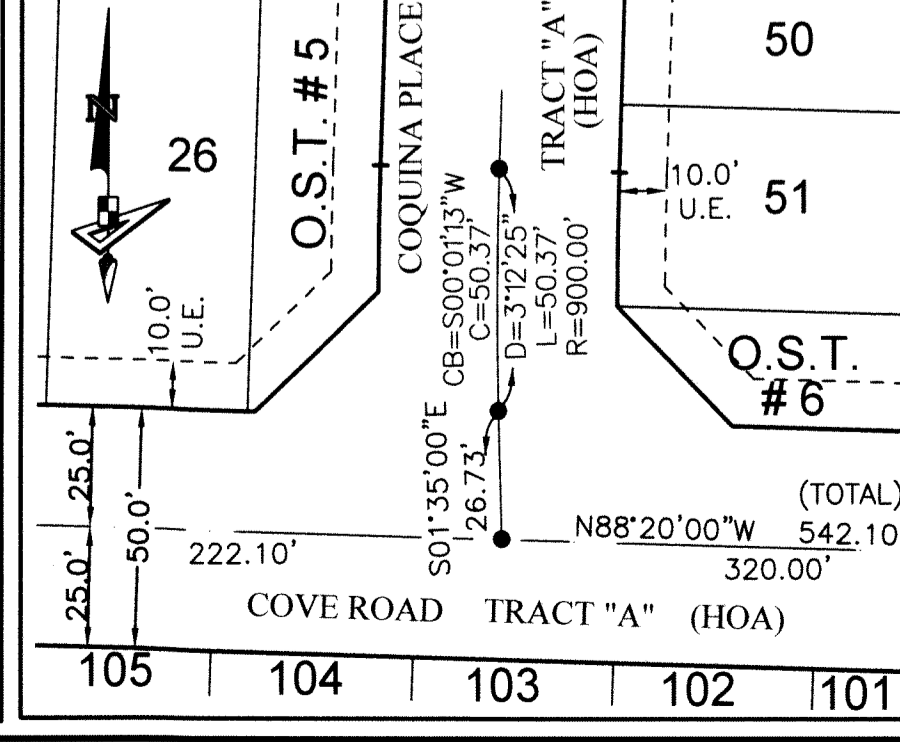
DETAIL "D" (SCALE: 1"=40')



DETAIL "C" (SCALE: 1"=40')



DETAIL "B" (SCALE: 1"=40')



4152 W. Blue Heron Blvd. Suite 105
Riviera Beach, FL 33404
Phone: (561) 444-2720
www.geopointsurvey.com
Licensed Business Number LB 7768